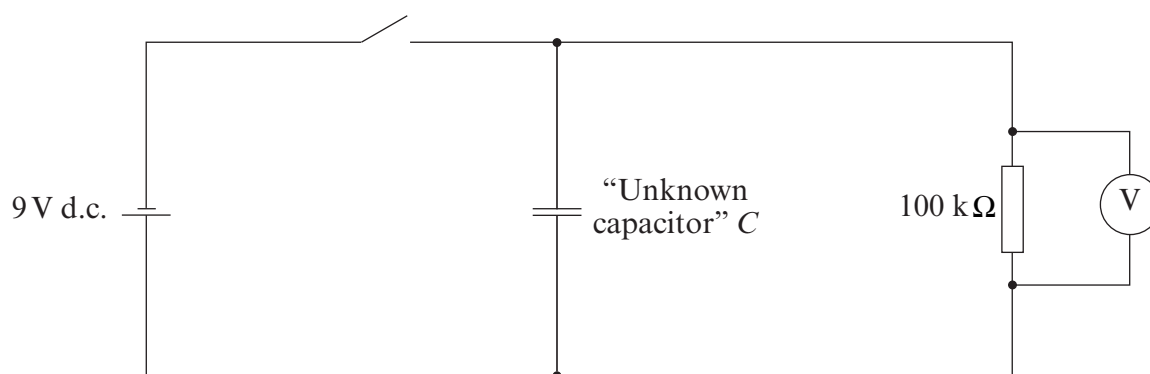


If candidates are provided with one press-to-make switch, the following information sheet may be used:

INFORMATION SHEET 1(a):**Test 1**

The circuit should be set up as follows:



When the switch is pressed, the capacitor charges up. When the switch is released, the capacitor discharges through the resistor.

In the event that a different variant of Information Sheet 1(a) is required, centres should produce their own with the same level of information and provide a copy with the moderation sample.

INFORMATION SHEET 1(b):

You need to measure the value of the p.d. across R at suitable time intervals and record your results in a table.